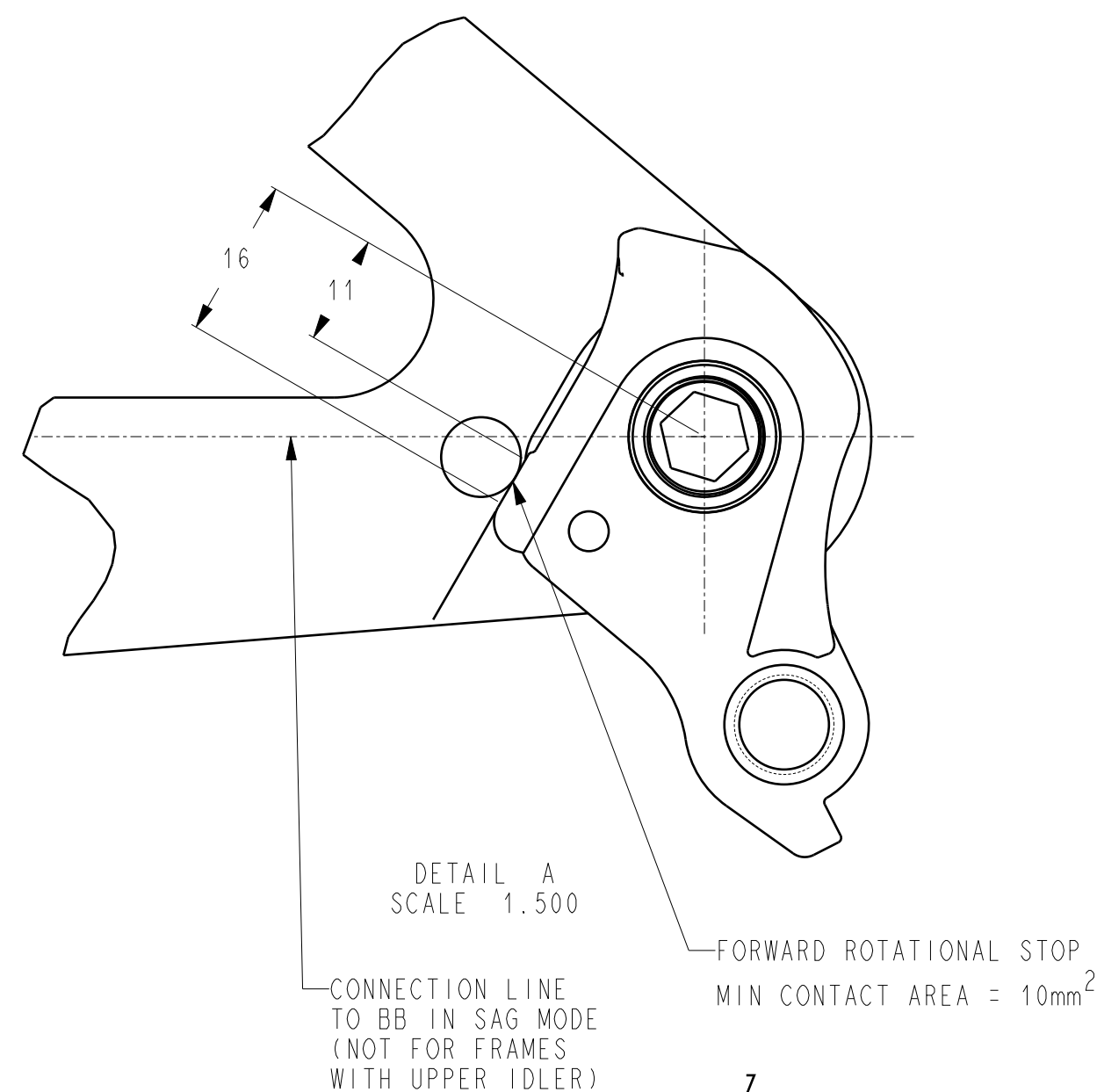
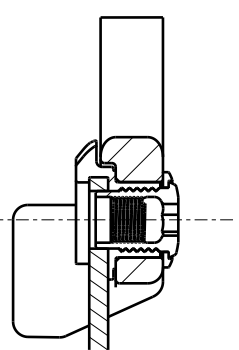
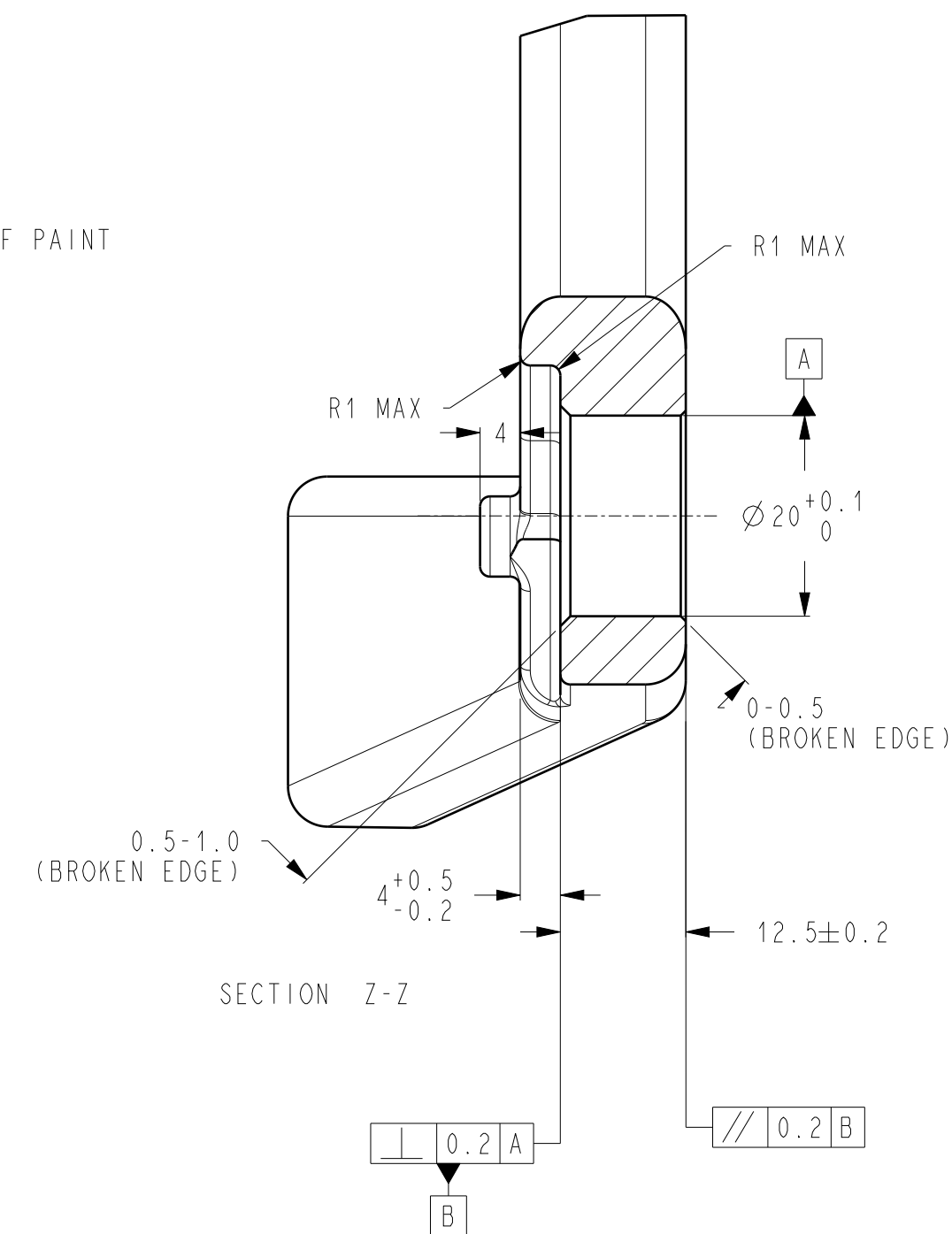
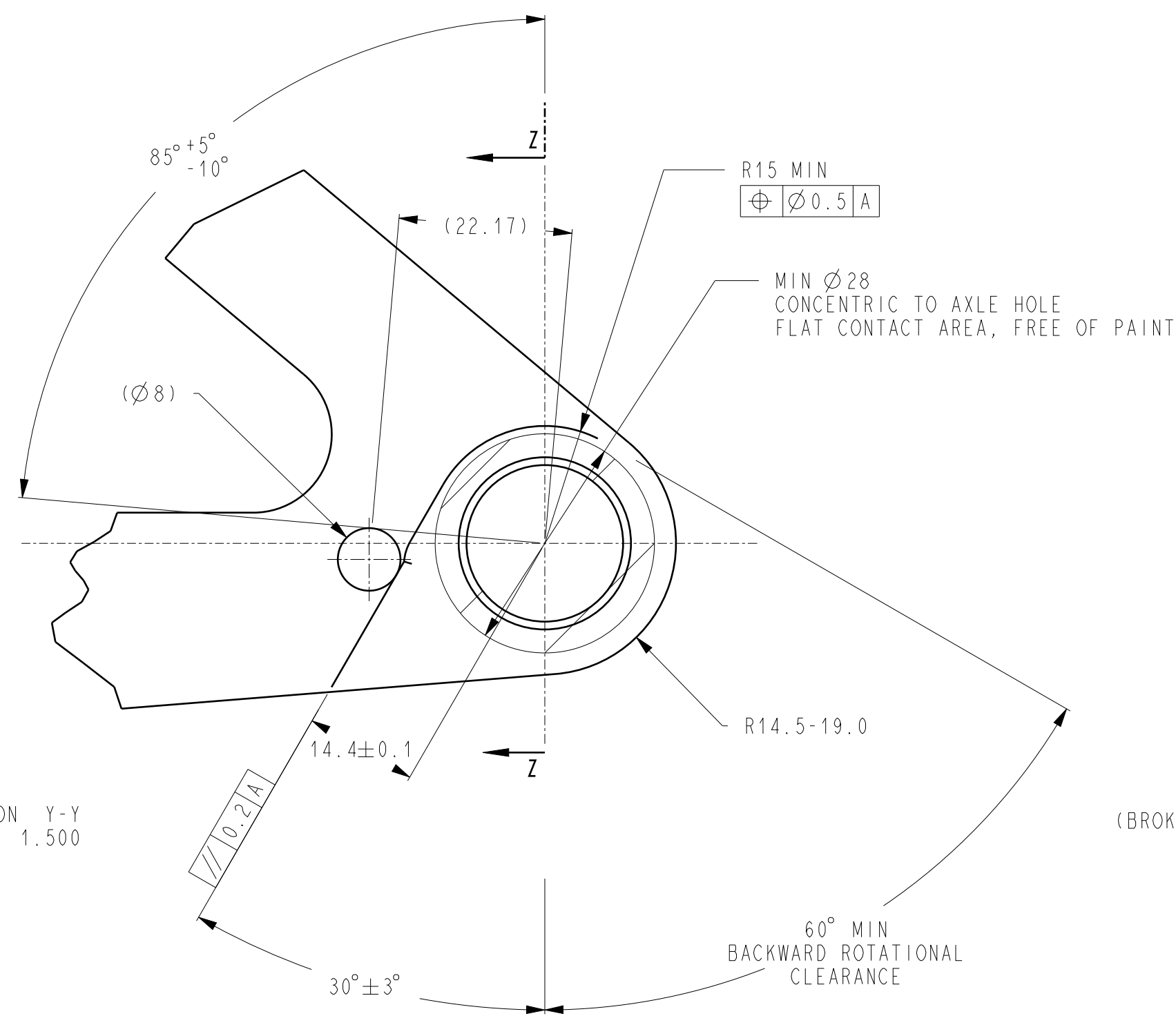
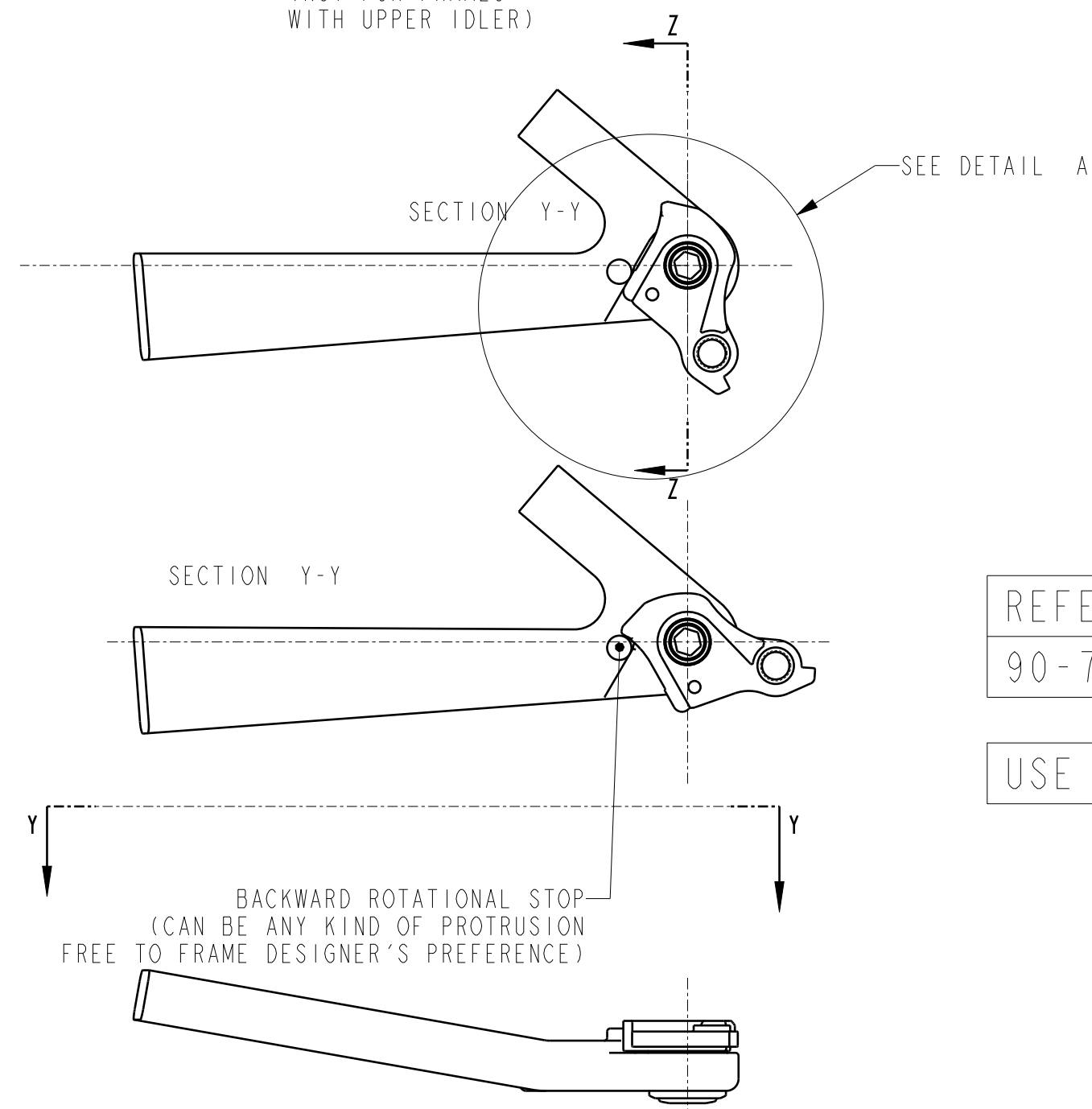


NAMED 3D MODELS CAN BE FOUND IN "UDH&FULL_MOUNT_RD_3D-MODELS_REV_H.stp".



SECTION Y-Y
SCALE 1.500



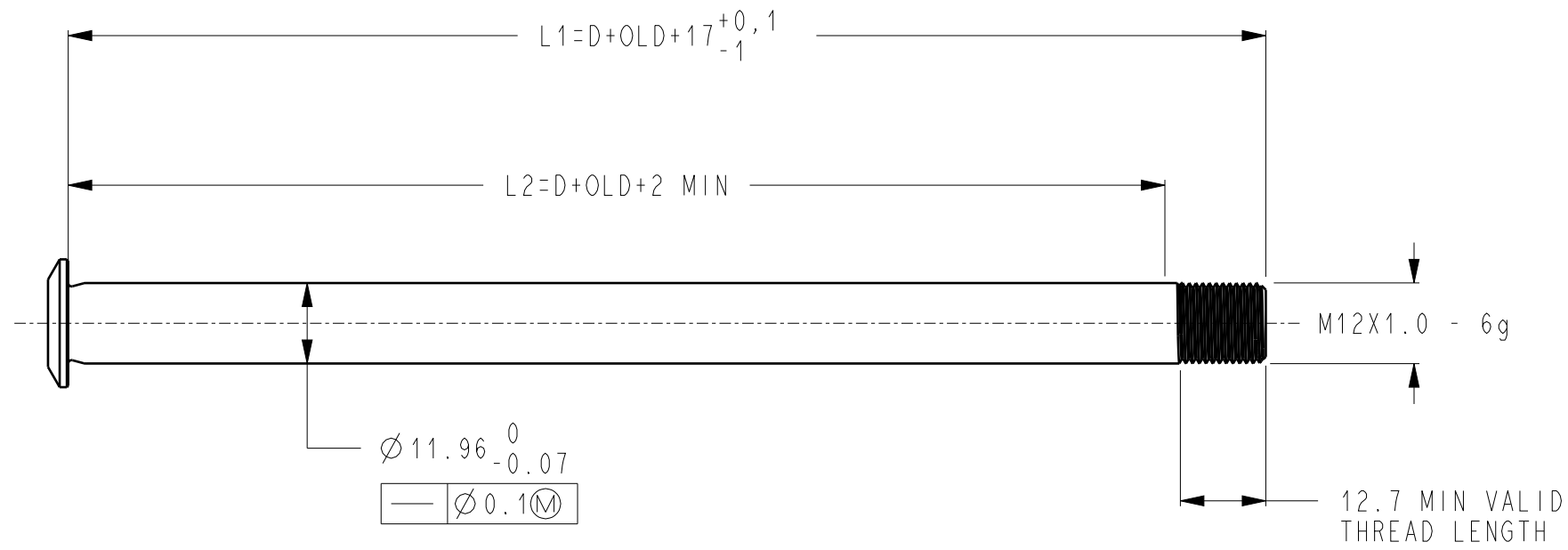
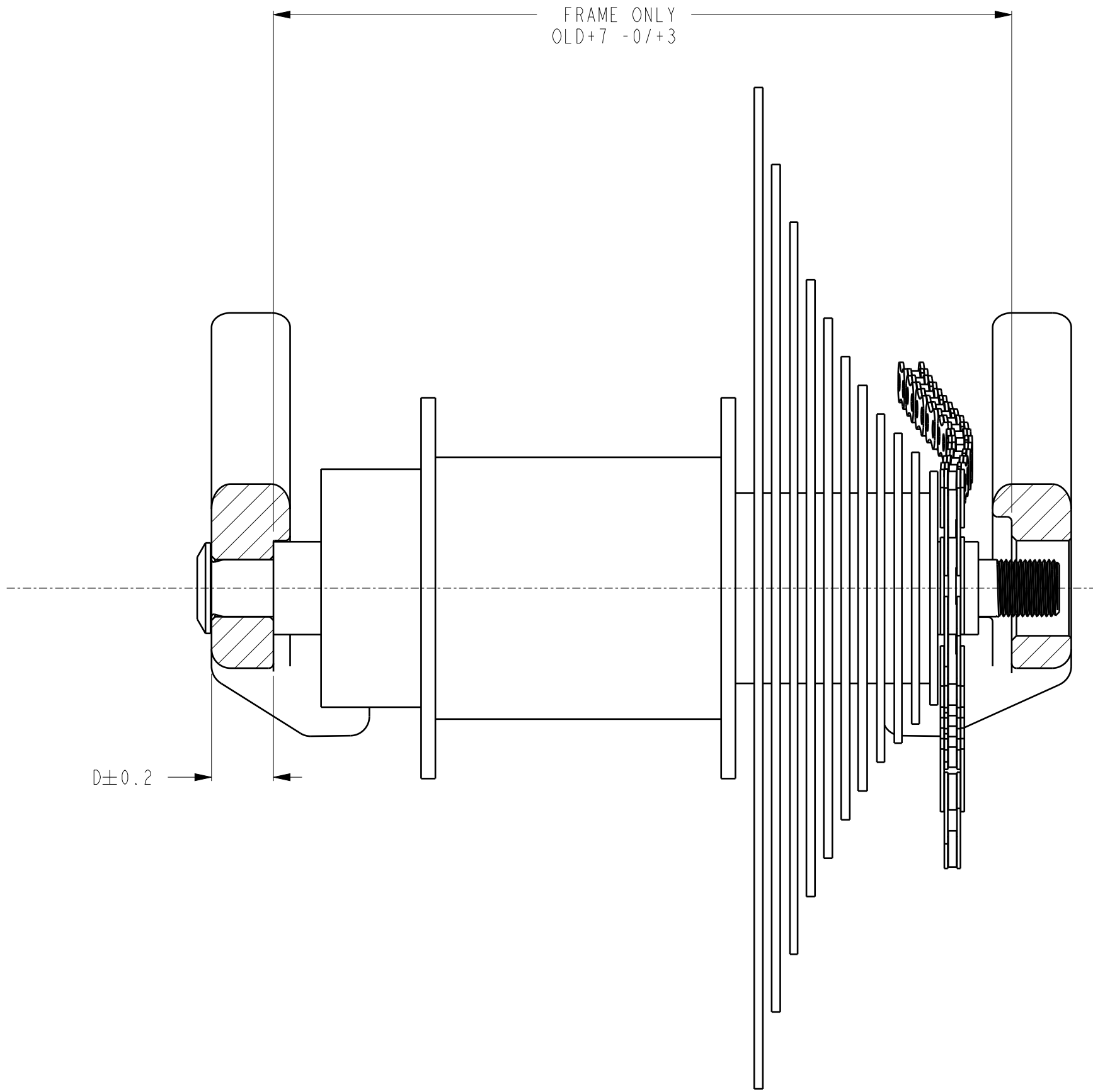
SECTION Z-Z

REFER TO HANGERLESS INTERFACE CLEARANCE MODEL
90-7518-190-070 REVISION H FOR 3D INSPECTION

USE DESCRIPTION ON SHEET 5 TO ALIGN THE CLEARANCE MODEL CORRECTLY

FORMAT: A2	SCALE: 0.500	SHEET: 2 / 8
LIFECYCLE STATUS Released	SRAM. CONFIDENTIAL - THIS DRAWING CONTAINS INFORMATION THAT IS PROPRIETARY TO SRAM CORPORATION AND MAY NOT BE DISCLOSED WITHOUT PERMISSION.	
DRAWING NAME / DESCRIPTION	UDH&FULL_MOUNT_RD_FRAME_SPEC	
DRAWING NUMBER	90-7518-190-000	VERSION H.14

APPLIES TO SYSTEMS WITH 142mm, 148mm or 157mm OLD



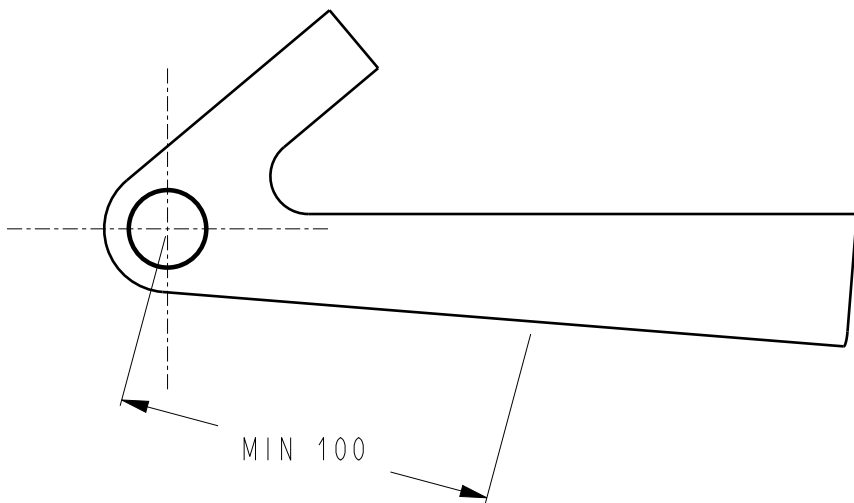
FORMAT: A2	SCALE: 1.000	SHEET: 3 / 8
LIFECYCLE STATUS Released	<div>SRAM.</div> <div>CONFIDENTIAL - THIS DRAWING CONTAINS INFORMATION THAT IS PROPRIETARY TO SRAM CORPORATION AND MAY NOT BE DISCLOSED WITHOUT PERMISSION.</div>	
DRAWING NAME / DESCRIPTION UDH&FULL_MOUNT_RD_FRAME_SPEC		
DRAWING NUMBER 90-7518-190-000		VERSION H.14

NAMED 3D MODELS CAN BE FOUND IN "UDH&FULL_MOUNT_RD_3D-MODELS_REV.H.stp".

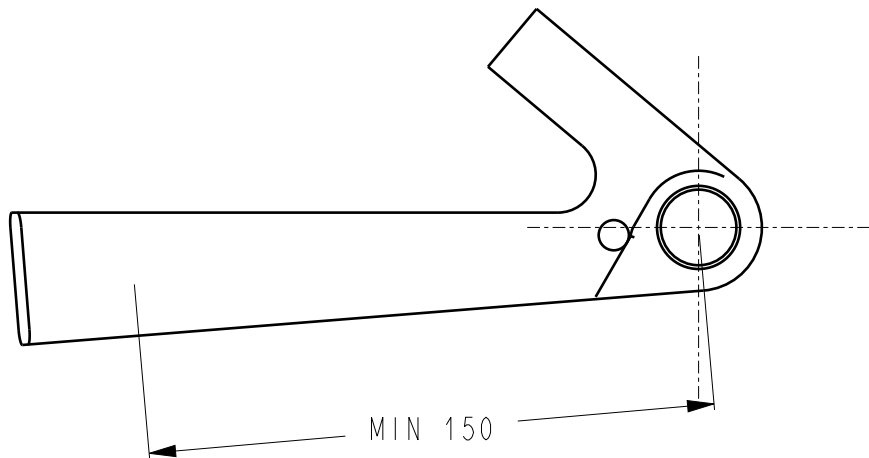
PROPOSED CABLE HOUSING EXIT POINTS AT THE FRAME
NEED TO BE VERIFIED DEPENDING ON THE SUSPENSION DESIGN

FOR COMPATIBILITY WITH THE AXS SRAM EXTENSION CORD, A CYLINDER (DIAMETER=5.8, LENGTH=19)
MUST PASS THROUGH THE DESIGNATED INTERNAL CABLE ROUTING PATH OF THE FRAME.

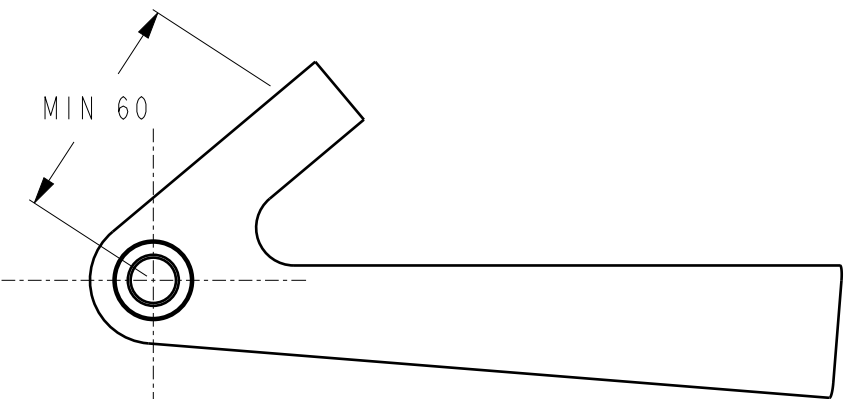
USE DEDICATED DERAILLEUR CABLES AND HOUSINGS WITH COMPRESSIONLESS HOUSING,
LOW FRICTION LINER, ALUMINUM FERRULES, WITHOUT SEALING AND 1.1MM POLISHED CABLE.
FERRULE DIAMETER 5.7+0.1 MM. CONTINUOUS HOUSING ONLY.
MAXIMUM TOTAL BEND ANGLE OF 500°. MINIMUM BEND RADIUS OF 50MM.
AVOID : S-BENDS WITH SMALL RADII AND PINCH SPOTS (HIGH HOUSING CLAMPING FORCE).
EXIT AT THE REAR END BEST AT SEAT STAY OR ON TOP OF THE CHAIN STAY.
MINIMIZE CABLE BENDING DUE TO SUSPENSION AND HANDLEBAR MOTION



LESS PREFERRED
CABLE EXIT ON THE BOTTOM OF THE CHAINSTAY

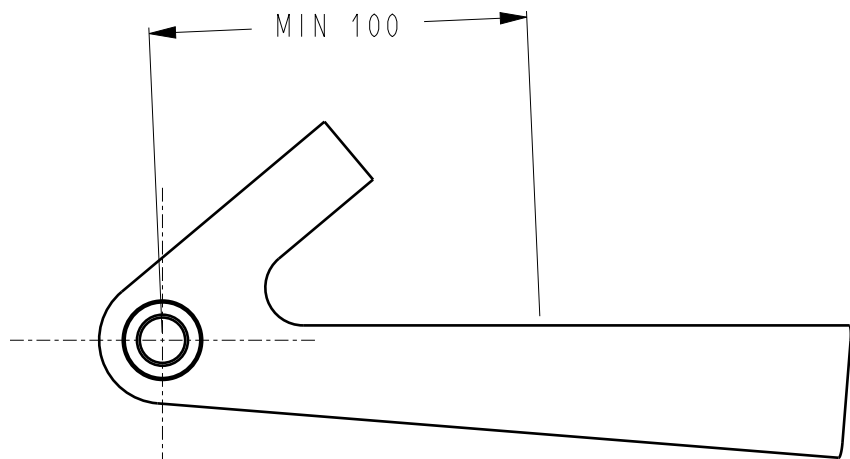


LESS PREFERRED
CABLE EXIT ON THE INSIDE OF THE CHAINSTAY



PREFERRED
CABLE EXIT ON TOP OF THE SEAT STAY

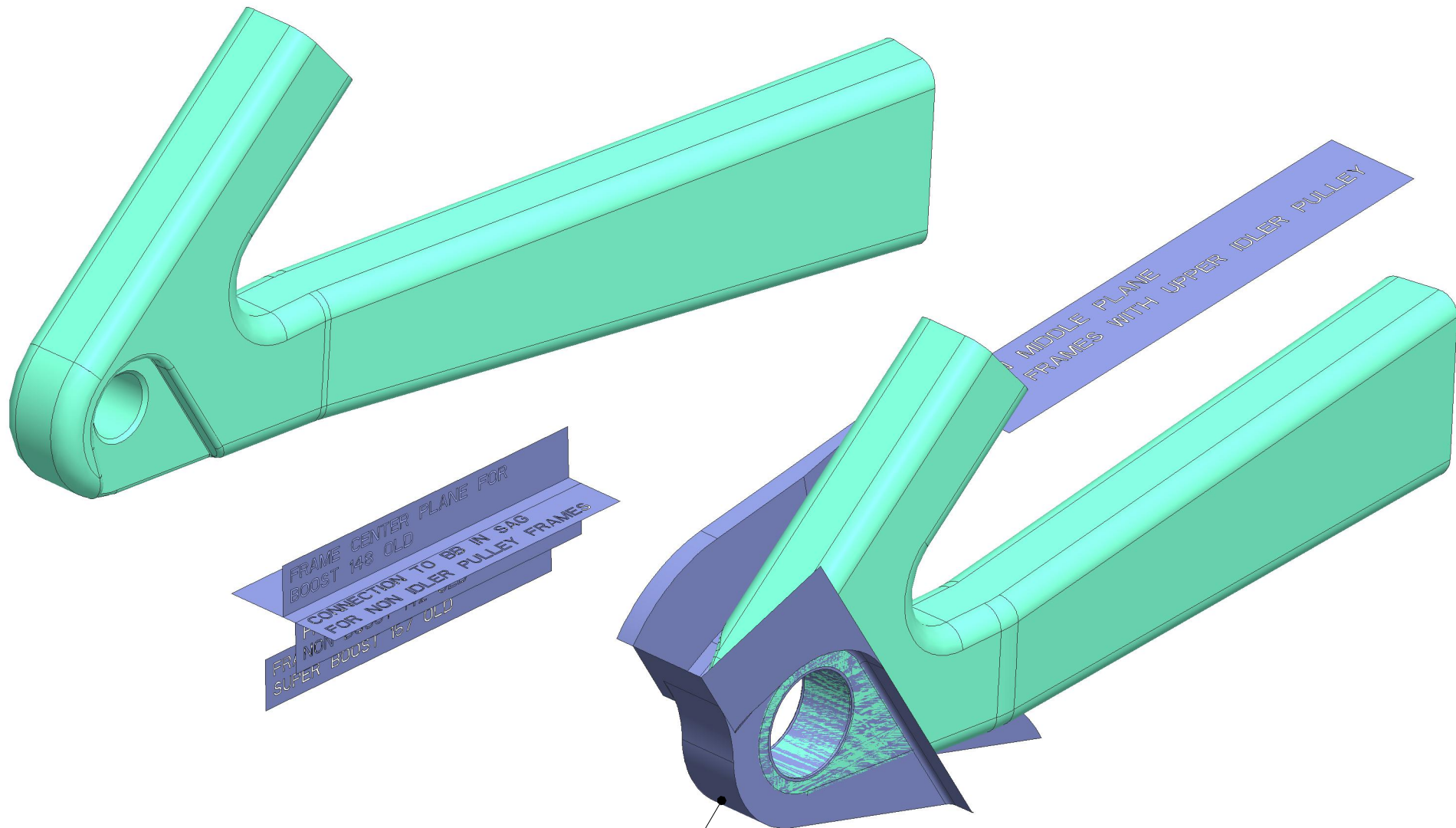
REFER TO REAR CABLE ENTRANCE DUMMY 90-7518-190-080
FOR REAR CABLE ENTRANCE LOCATION



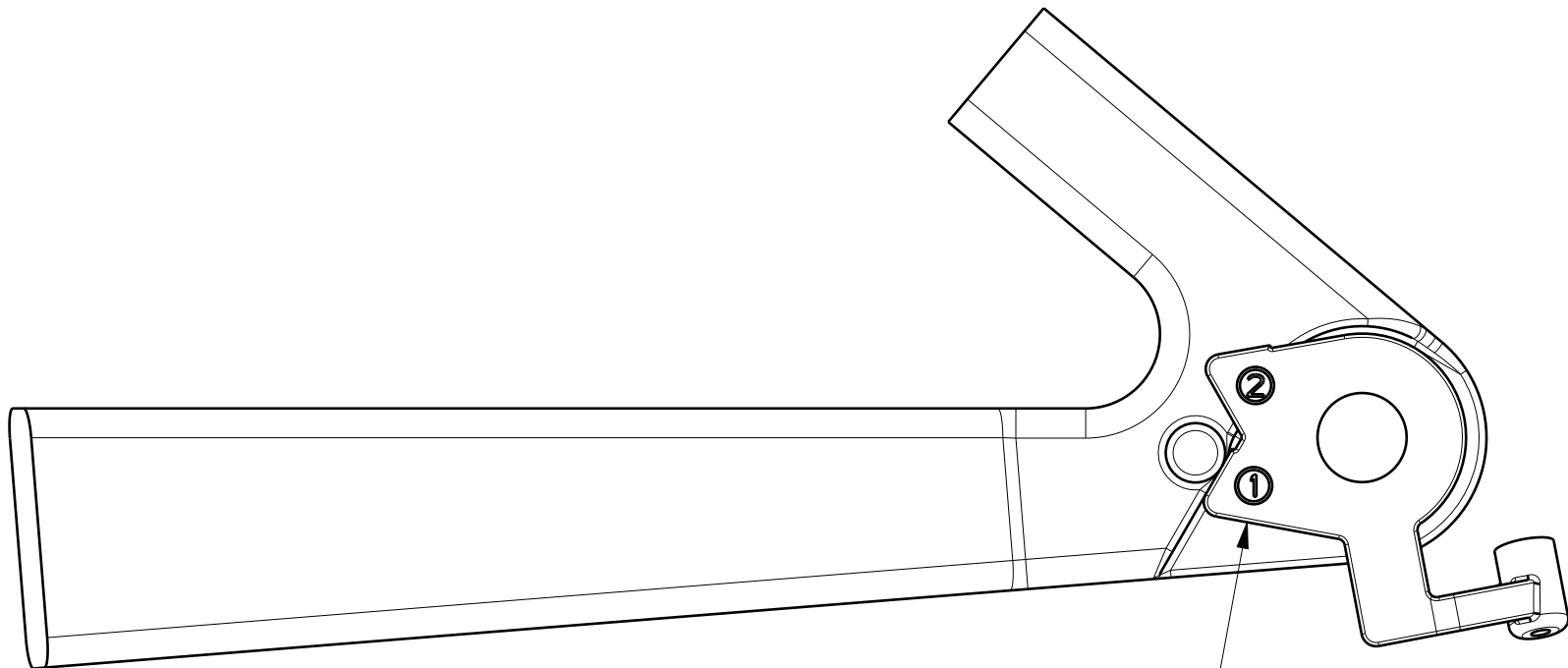
PREFERRED
CABLE EXIT ON TOP OF THE CHAIN STAY

FORMAT: A2	SCALE: 0.500	SHEET: 4 / 8
LIFECYCLE STATUS Released	SRAM. CONFIDENTIAL - THIS DRAWING CONTAINS INFORMATION THAT IS PROPRIETARY TO SRAM CORPORATION AND MAY NOT BE DISCLOSED WITHOUT PERMISSION.	
DRAWING NAME / DESCRIPTION UDH&FULL_MOUNT_RD_FRAME_SPEC		
DRAWING NUMBER 90-7518-190-000		VERSION H.14

PLEASE REFERENCE ALL MODELS USING THE COORDINATE SYSTEM WITH:
X-AXIS ALIGNED WITH HUB AXIS.
X-PLANE ALIGNED WITH END FACE OF DRIVE-SIDE HUB AXLE END CAP.
FRAMES WITHOUT UPPER IDLER PULLEY: Y-AXIS ALIGNED WITH A PLANE DEFINED BY THE HUB AXIS AND THE BOTTOM BRACKET AXIS IN THE SAG POSITION.
FRAMES WITH UPPER IDLER PULLEY: "CHAIN MIDDLE PLANE" ALIGNED WITH TANGENTIAL PLANE DEFINED BY THE SMALLEST COG PITCH CIRCLE DIAMETER (41.1mm) AND THE IDLER PULLEY PITCH CICLE DIAMETER IN THE SAG POSITION.
NAMED 3D MODELS CAN BE FOUND IN "UDH&FULL_MOUNT_RD_3D_MODELS_REV.H.stp".

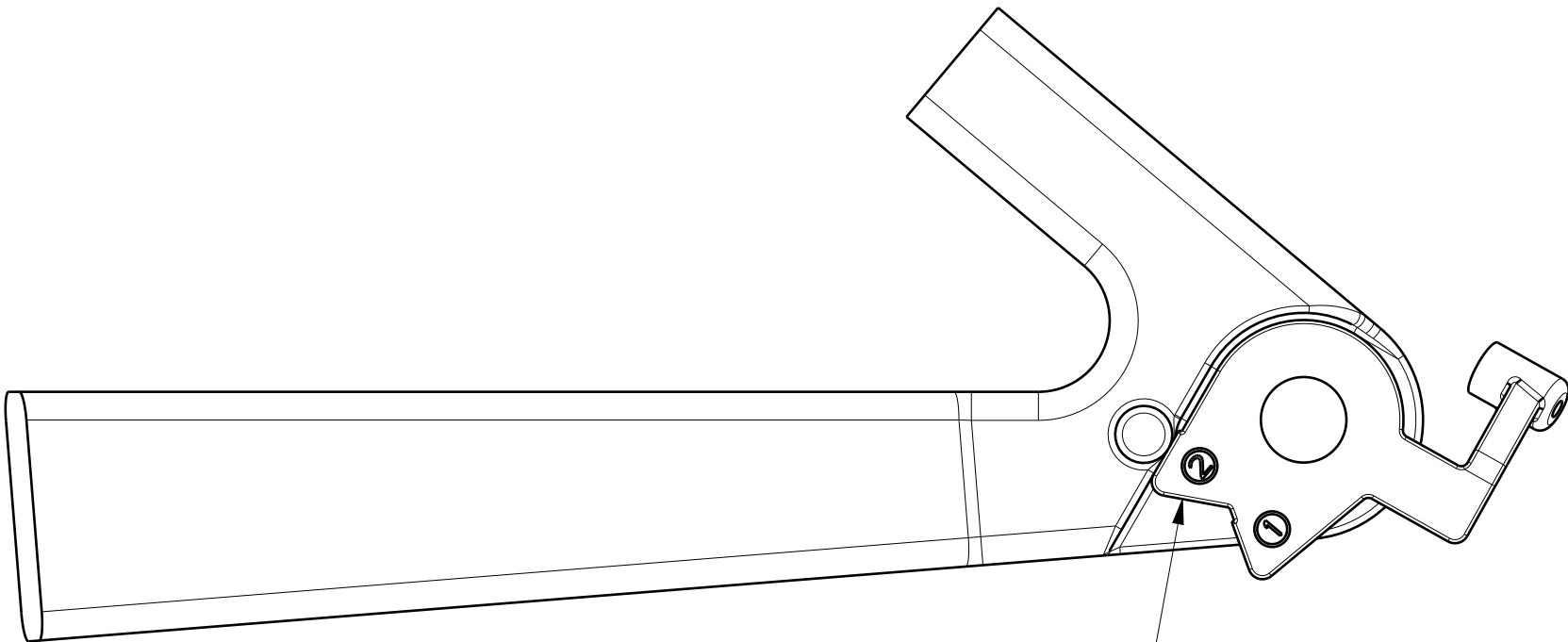


HANGERLESS INTERFACE CLEARANCE MODEL
90-7518-190-070 REVISION H



REAR CABLE ENTRANCE DUMMY 90-7518-190-080
ALIGN TO CONTACT 1 FOR OPERATIONAL STATE

SECTION Y-Y



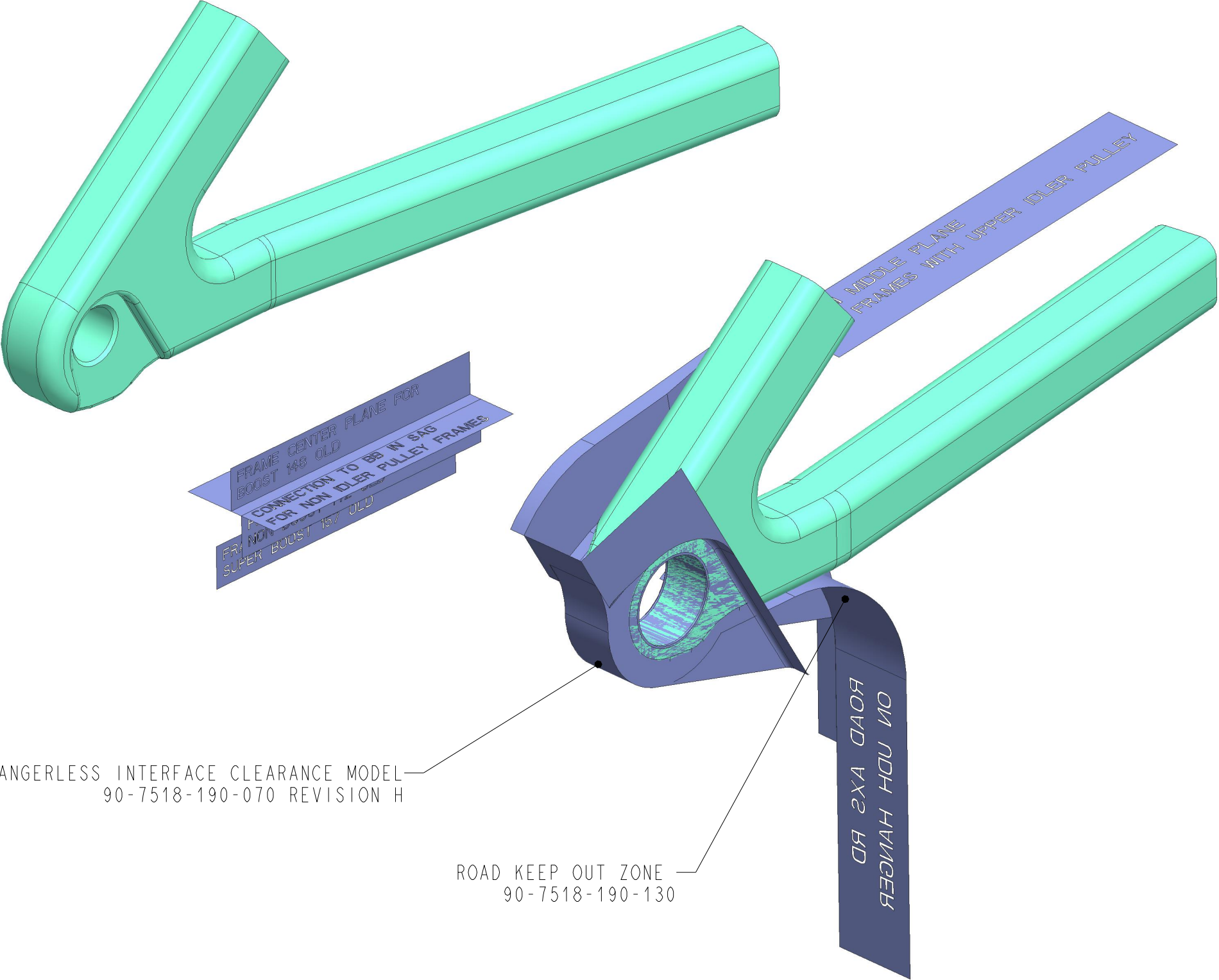
ALIGN TO CONTACT 2 FOR WHEEL REMOVAL STATE
(50 DEGREES FROM OPERATIONAL STATE)

SECTION Y-Y

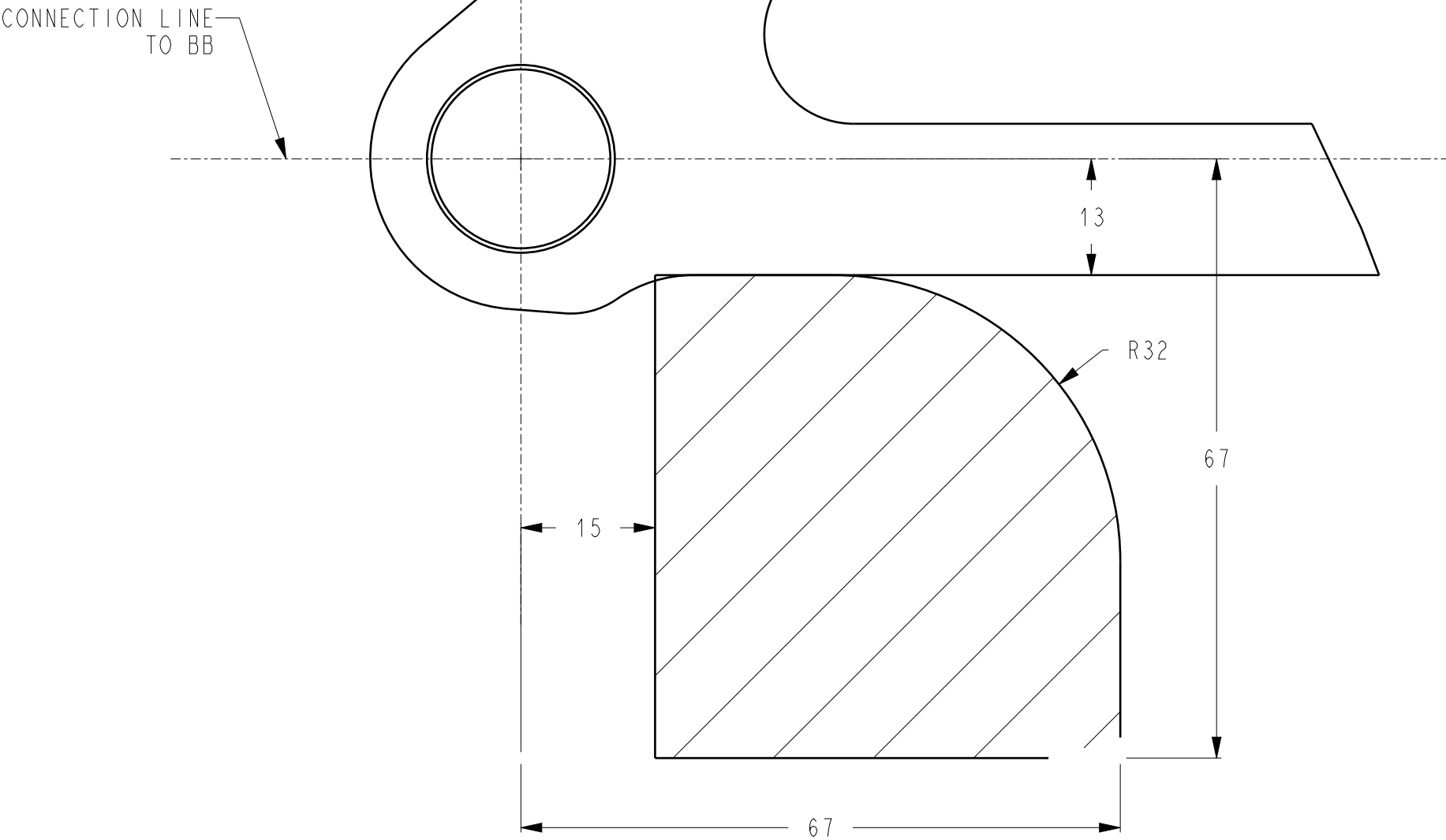
FORMAT: A2	SCALE: 0.500	SHEET: 5 / 8
LIFECYCLE STATUS Released	SRAM. CONFIDENTIAL - THIS DRAWING CONTAINS INFORMATION THAT IS PROPRIETARY TO SRAM CORPORATION AND MAY NOT BE DISCLOSED WITHOUT PERMISSION.	
DRAWING NAME / DESCRIPTION	UDH&FULL_MOUNT_RD_FRAME_SPEC	
DRAWING NUMBER	90-7518-190-000	VERSION H.14

FOR THE USE OF ROAD AXS RD ON UDH PLEASE USE 90-7518-190-130 (ROAD KEEP OUT ZONE) IN ADDITION TO 90-7518-190-070 REV H (HANGERLESS INTERFACE CLEARANCE MODEL) FOR 3D VERIFICATION.

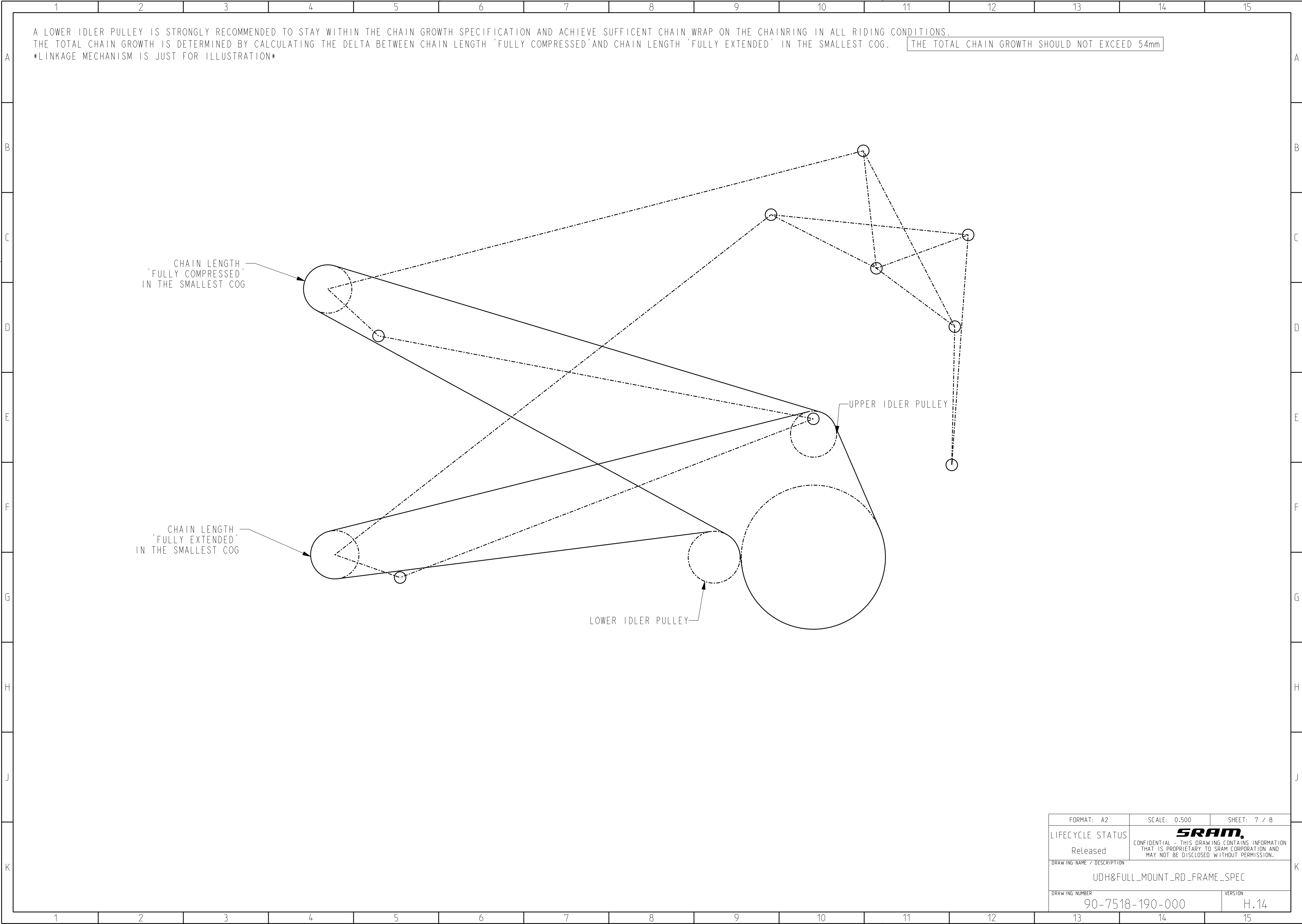
PLEASE REFERENCE ALL MODELS USING THE COORDINATE SYSTEM WITH:
X-AXIS ALIGNED WITH HUB AXIS.
X-PLANE ALIGNED WITH END FACE OF DRIVE-SIDE HUB AXLE END CAP.
Y-AXIS ALIGNED WITH A PLANE DEFINED BY THE HUB AXIS AND THE BOTTOM BRACKET AXIS IN THE SAG POSITION.
NAMED 3D MODELS CAN BE FOUND IN "UDH&FULL_MOUNT_RD_3D_MODELS_REV.H.stp".



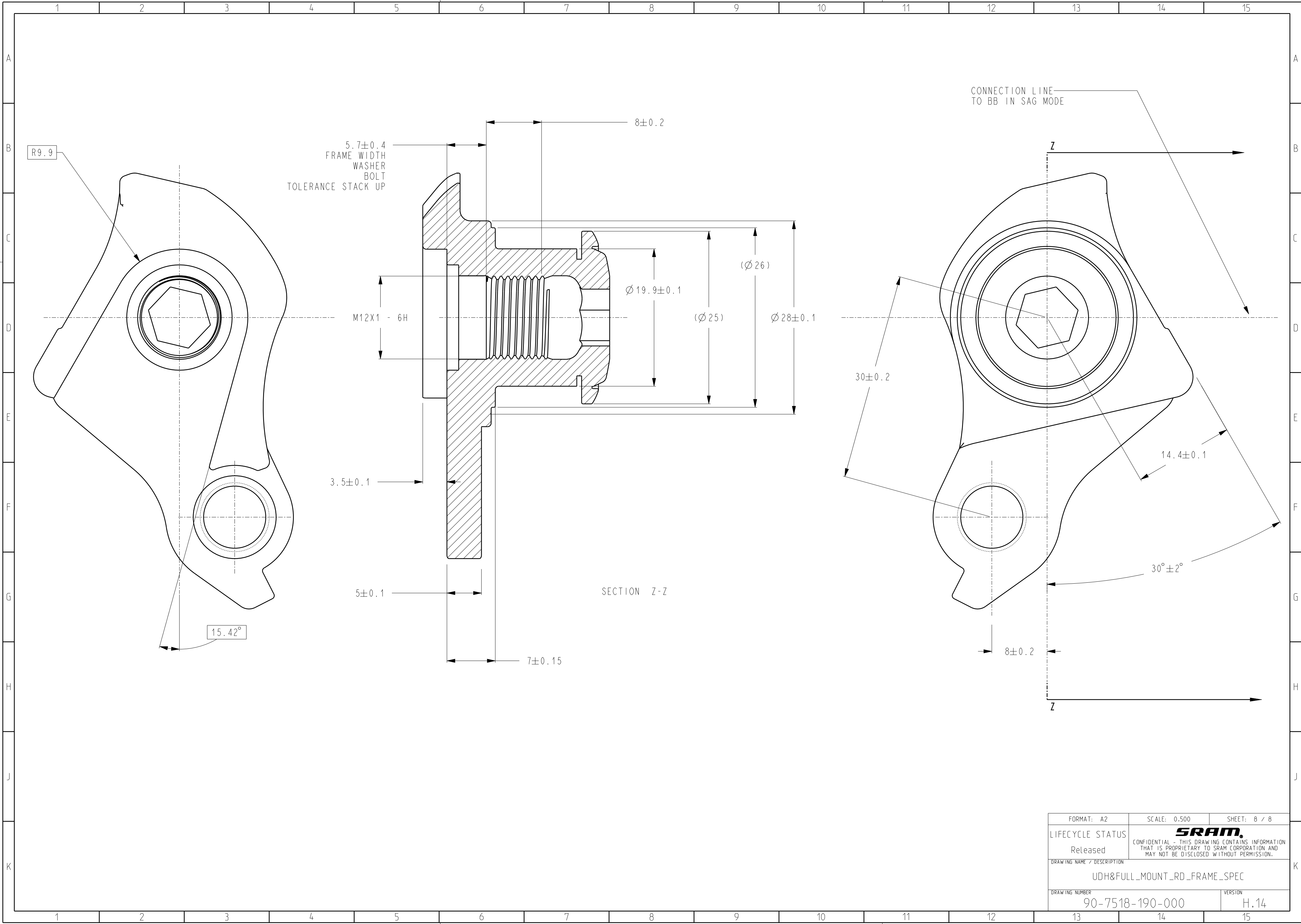
KEEP OUT ZONE FOR ROAD AXS REAR DERAILLEUR ON UDH



FORMAT: A2	SCALE: 0.500	SHEET: 6 / 8
LIFECYCLE STATUS	SRAM. CONFIDENTIAL - THIS DRAWING CONTAINS INFORMATION THAT IS PROPRIETARY TO SRAM CORPORATION AND MAY NOT BE DISCLOSED WITHOUT PERMISSION.	
Released		
DRAWING NAME / DESCRIPTION	UDH&FULL_MOUNT_RD_FRAME_SPEC	
DRAWING NUMBER	90-7518-190-000	VERSION H.14



FORMAT: A2	SCALE: 0.500	SHEET: 7 / 8
LIFECYCLE STATUS	SRAM. CONFIDENTIAL - THIS DRAWING CONTAINS INFORMATION THAT IS PROPRIETARY TO SRAM CORPORATION AND MAY NOT BE DISCLOSED WITHOUT PERMISSION.	
Released		
DRAWING NAME / DESCRIPTION		
UDH&FULL_MOUNT_RD_FRAME_SPEC		
DRAWING NUMBER		VERSION
90-7518-190-000		H.14



FORMAT: A2	SCALE: 0.500	SHEET: 8 / 8
LIFECYCLE STATUS	SRAM. CONFIDENTIAL - THIS DRAWING CONTAINS INFORMATION THAT IS PROPRIETARY TO SRAM CORPORATION AND MAY NOT BE DISCLOSED WITHOUT PERMISSION.	
Released		
DRAWING NAME / DESCRIPTION	UDH&FULL_MOUNT_RD_FRAME_SPEC	
DRAWING NUMBER	90-7518-190-000	VERSION H.14